

Thank you for purchasing the PUNK CO2 INFLATOR.

Please read these instructions thoroughly before attempting to install this item.

Proper installation is required for safe riding. Contact us or a bike mechanic if you are not sure with certain steps.

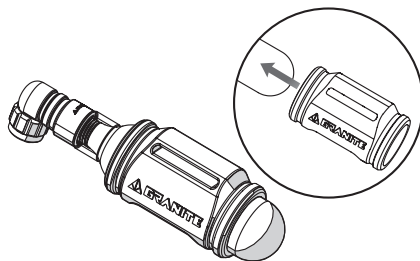
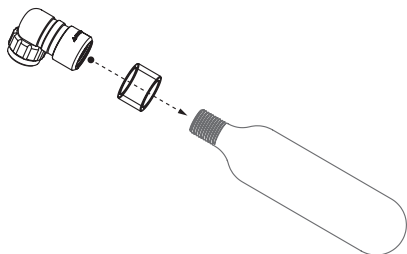
### CONTENTS

|                   |       |      |                |       |      |
|-------------------|-------|------|----------------|-------|------|
| · Inflator        | ----- | 1 PC | · Plastic ring | ----- | 1 PC |
| · Silicone sleeve | ----- | 1 PC |                |       |      |

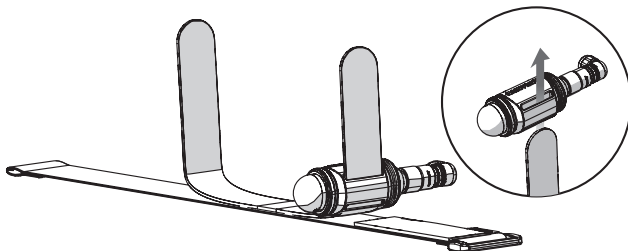
### CO2 INFLATOR INSTALLATION

1. Place the plastic ring around the thread of the CO2 canister, then screw the inflator onto the thread.

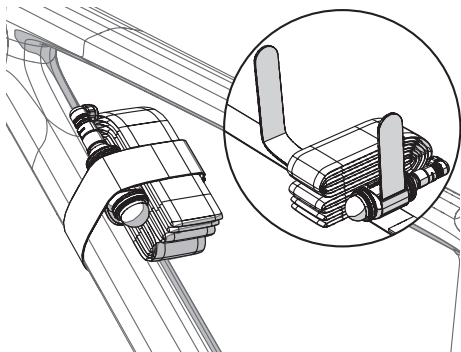
Slide the silicone sleeve onto the CO2 canister.



2. Pass the inner hook-and-loop strap of Rockband through the CO2 sleeve.



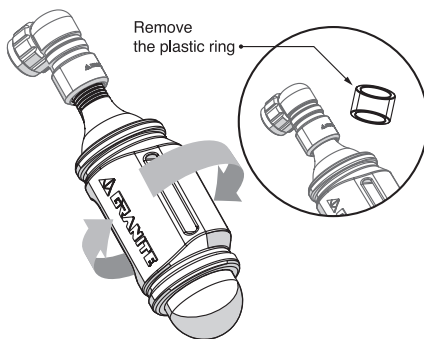
3. Use the strap to attach the inflator and any other useful items (inner tubes, tyre levers, snacks, beers) to your bike's frame.



4. To inflate, remove the plastic ring from the CO2 canister.

Screw the canister into the inflator until you feel it break the seal.

The inflator is now ready to go.



5. Open your tube's Presta valve. Push the inflator onto the valve. Carefully unscrew the canister and the air will start to flow.

You can regulate the airflow by screwing the canister in or out. **We'd recommend wearing gloves during use as the canister can become very cold during inflation.**

